

College of Food, Agricultural
and Natural Resource Sciences

UNIVERSITY OF MINNESOTA



2008-2009
ANNUAL Report



CFANS Scholarships

Gifts for scholarships help hundreds of students in the College of Food, Agricultural and Natural Resource Sciences. Scholarships strengthen the student body and provide outstanding educational opportunities. We give thanks for the generosity of all those individuals and organizations that make this possible.

Howard C. Abraham Scholarship
African Women Technical Training
Ag Engineering Faculty Scholarship
Agriculture Scholarship
AgStar Scholars
Professor Alderman Scholarship
Joseph N. Alexander Scholarship
Gene and Connie Allen International Award
Philip and Mary Allen Horticulture Scholarship
John H. Allison Scholarship
Evan Allred Scholarship
Alpha Zeta Travel Award
Jane Nye Andrus Scholarship
Clara A. Auch Scholarship
Biosystems & Agricultural Engineering Alumni Scholarship
Bailey Nurseries WCROC Internship Scholarship
Elizabeth and John Vincent Bailey Scholar
Gordon and Margaret Bailey Foundation Scholarship
Vincent K. Bailey Scholarship
Donald Baker Scholarship
Ernest Baughman Scholarship
Ernest T. Baughman Endowment Scholarship
W. Forest Bear Agriculture Education Endowed Scholarship
W. F. Bear 2+2 Ag Scholar
Frank A. Bele Memorial Scholarship
Robert C. Bernard Memorial Scholarship
Frank A. Bezdicek Scholarship
Ken and Marie Bezdicek Scholarship
Bioproducts Engineering Scholarship
Bio-based Products Scholarship
Bio-based Products Student Leader Scholarship
Richard Bonde Scholarship
Norman Borlaug Scholarship
Jim L. Bowyer Scholarship
R. M. Brown Scholarship
Dr. Stanley and Mertie Buckman Scholarship

Don and Nancy Butler Scholarship
Thomas H. Canfield Memorial Scholarship
Cargill Scholarship
Carolind Scholarship
Central Livestock Scholarship
CFANS Alumni Society Agriculture Scholarship
CFANS Alumni Society Food Scholarship
CFANS Alumni Society Natural Resources Scholarship
CFANS Alumni Society New Students Scholarship
CFANS Dean's Scholar Program
CFANS Gamma Omicron Beta Scholarship
CFANS International Scholarship
CFANS Legacy Scholarship
CFANS Scholarship
Charles Christians Scholarship
Clifford and Marie Christenson Endowment
CHS Foundation Scholarships
CNR Class of '57 Scholarship
CoBank Scholarship
Coulter Food Science Scholarship
Professor Eugenia A. Davis Memorial Scholarship
Day Family Scholarship
Department of Applied Economics Alumni, Faculty and Friends Scholarship
Diversity in Food Systems Scholarship
DONAN Scholarship
Caleb Dorr Scholarship
Annette Dowell Scholarship
Austin and Isabel Dowell Scholarship—AG School
Charlotte Hannaford Drake Scholarship
Marylee Duehring Memorial Scholarship
Eberle Scholarship
Laddie Elling Scholarship
Dr. Laddie Elling Endowed Scholarship
Bert G. and Iverne L. Enestvedt Scholarship
Dr. M. E. Ensminger Scholarship
Edward. Everett Memorial Scholarship
Ferguson Heritage Endowed Scholarship
Laura B. Ferguson Endowed Scholarship
Fisheries, Wildlife, and Conservation Biology Scholarship
Arnold M. Flikke Scholarship
Cora B. Fogg Endowment Scholarship
Food Science Scholar
Forest Products Council
Forest Products Management Development Institute Scholarship
Forest Products Marketing Scholarship
Forest Resources General Department Scholarship

Forest Resources Scholarship
Forestry Club Scholarship
Thomas W. French Memorial Scholarship
Garden Club of Ramsey County Scholarship
James Garvey Scholarship
Laura Garvey Scholarship
Gideon Memorial Scholarship
Gluek Memorial Fund in Agriculture
Golf Scramble Scholarship
Richard D. Goodrich Scholarship
R. L. Goudy Memorial Forestry Scholarship
Edgar and Arlene Graupmann Scholarship
S. B. Green Scholarship and Loan Fund
Harriet Greenberg Endowment
Richard A. Hamilton Scholarship
Hamm Memorial Scholarship
Axel Hansen Memorial Scholarship
Mary Hart Scholarship
Edgar Hartwig Undergraduate Scholarship
H. K. Hayes Scholarship
Roland and Beverly Hendrickson Scholarship
Robert and Helen Henton Scholarship
William Hobbs Memorial
Jay C. Hokenstrom Memorial Scholarship
Holmberg Scholarship
James P. Houck Memorial Scholarship
Professor Andrew and Anne Hustrulid Scholarship
Arthur E. Hutchins Scholarship
International Scholarship
Wallace H. Jerome Scholarship
Dave and Pat Johnson Scholarship
Steven W. Johnston CFANS Scholarship
Herman H. Jolosky Award
Lori Jones Scholarship
Robert M. Jordan Scholarship
Howard E. Kaerwer Scholarship
Frank H. and Ione Mossman Kaufert Forestry Education
Harry Kay Endowment Scholarship
Joseph M. Kemen Scholarship
Dayton P. Kirkham Sr. Scholarship Fund in Forest Resources
Timothy B. Knopp Memorial Scholarship
Clifford M. Kohler Scholarship
Jennifer Kohn Scholarship
Waino John Kortesmaki Scholarship
Hal E. Kosbau Memorial Scholarship
Lake State Section TAPPI—Paper Science/Engineering
Elvira C. Larson Scholarship
Edward L. Lawson Scholarship

Kenneth Lee Scholarship
Jane M. Leichsenring Scholarship
Allen S. and Nancy Levine Scholarship
Alton Levorson Scholarship
Quincy L. Lewis Scholarship
Charles E. Lofgren Scholarship
Lofgren Undergraduate Honor Award Scholarship
Ludden Scholarship
Ludden Trust Fund
MAST Scholarship
Oscar Mather Scholarship
Thomas M. and Drusilla Paist McGill Scholarship
Ken Merriam Scholarship
Will M. Meyers Memorial Scholarship
Midwest Dairy Association Scholarship
Thomas L. Mielke-Weyerhaeuser Scholarship
William R. Miles Scholarship in Forestry
Minnesota Association of Extension Ag Professionals
MN Chapter of the American Society of Farm Managers and Rural Appraiser
Minnesota Corn Growers Association Scholarship
Minnesota FFA Association and MN Association of Agricultural Educators Agriculture Merit Scholarship
Minnesota FFA Foundation Scholarship
Minnesota Garden Flower Society Scholarship
Minnesota Nursery and Landscape Association Scholarship
MN Plant Food Association Scholarship
Minnesota Park Supervisor's Association Scholarship
Minnesota Scholars
Minnesota Section TAPPI Paper Science and Engineering Scholarship
Minnesota Sports Turf Managers Association Scholarship
Ian Moore Faculty Scholarship
Marian Fawcett Moose Scholarship
Peter and Florence Monsour Scholarship
The Louise Mullan Scholarship in Nutrition
C.J. Mulrooney Endowed Memorial Scholarship
Mulvehill-McGregor Scholarship
Munich and Wahler Memorial Scholarship
Cletus Murphy Scholarship
Jerry Nelson Scholarship
Leiton E. Nelson Scholarship
Northwest Feed Manufacturers Association Scholars
Northwestern Lumber Association Scholarship
S. K. Olberg Scholarship
Old Dutch Foods Scholarship
Norman Olness Memorial Scholarship
Elmer Hampton Olson Scholarship

Ken Olson Memorial Scholarship Endowment
 William and Georgia Olson Scholarship
 Charles and Janet Oris Scholarship
 Harley Otto Memorial Scholarship
 Charles Lathrop Pack Awards in Forestry
 Paper Chase Scholarship
 Paper Science Alumni Scholarship
 Paper Science Scholarship
 Phillip and Jean Parsons Scholarship
 Thomas Murdock Partridge Memorial
 Kimberley Ann Paulsen Memorial Scholarship
 Hugo J. and Helen K. Pawek Undergraduate Assistantship for International Study
 Lloyd and Ardyce Peterson Scholarship
 Robert D. Peterson Award
 Roland L. and R. Geraldine Peterson Scholarship Fund
 Walter R. Peterson Scholarship
 Willis L. Peterson Undergraduate Study Scholarship

Curtis and Shirley Pietz Scholarship
 PIMA Paper Science Scholarship Endowment
 Plant Science Scholars Scholarship
 Wilson G. Pond Scholarship
 Renewable Fuels Association Scholarship
 A. G. Roan Scholarship
 Routh-Christiansen Scholarship
 C.N. Ruedlinger Memorial
 Safari Club International—Erik Ness Memorial Scholarship
 Stanley D. Sahlstrom Agricultural Education Scholarship
 Lynn Sandberg Memorial Scholarship
 Thomas C. Sando Scholarship
 Joanna D. Schmitt Memorial Scholarship
 Henry Schmitz Student Leadership Award
 Augustus E. Searle Scholarship
 Tony and Rel Seykora Scholarship
 Myrtle V. Shisler Agricultural Scholarship
 Robert N. and Gladys M. Shoffner Scholarship in Avian Genetics

Siehl Prize Scholarship
 Dale R. and Ingebor Smith Scholarship
 Lawrence H. and Jacquelyn J. Smith Undergraduate Scholarship
 Leon C. Snyder Scholarship
 Soil and Sunshine Garden Club Scholarship
 Spandl Family Scholarship
 St. Anthony Park Garden Club Scholarship
 Susan G. Stafford Endowed Scholarship
 Russell V. Stansfield Scholarship
 Dale Steussy Scholarship
 Charles W. Stickney Scholarship
 O. A. Storvick/Elmer L. Thomas Memorial
 John Strait Scholarship
 Oliver E. Strand Scholarship
 Student Enrichment
 Sundet Family Scholarship
 Morris H. Titrud Scholarship
 Robert Touchberry Scholarship
 Trans-Mississippi Golf Association Scholarship

Triticus Scholarship
 Elizabeth and Edgard Ukkelberg Scholarship
 Eloise M. Van Slyke Scholarship
 Wagner Greenhouse Scholarship
 Waller Award for Food Science and Nutrition—CFANS
 Weyerhaeuser Wood-Based Composites Scholarship
 Allen and Joan Wiese Scholarship
 John Williams Memorial Scholarship
 A.D. Wilson Prize
 Harold K. Wilson Scholarship
 Kenneth E. Winsness Memorial Scholarship
 Raymond J. and Carol V. Wood Forest Resources Scholarship
 Leonard Wulf Scholarship
 Professor Kewen Karen Yin Scholarship
 Helen A. Young Memorial Scholarship
 Ruth Arnesen Zalar Scholarship



Alice Biester Assistantship
 Babcock Swine Fellowship
 Basil Furgala Scholarship Fund
 Bioproducts and Biosystems Engineering Graduate Fellowships
 Buckman Fellowship
 Burle & Lou Gengenbach Graduate Fund
 Burnham/Chang Fund
 Butler & Jessen Water Resources Science Fellowship
 C. Biester Career Development Fund
 Carl & Johanna Eide Endowment
 Carol Turnbull Memorial Fellowship
 Catherine S. Hill Fellowship Fund
 CHS Graduate Fellowship
 Deane Turner Graduate Fellowship
 Donald C. Rasmuson Graduate Education Fund
 Donald C. Rasmuson Fellowship
 E. C. Stakman Plant Pathology Graduate Student Fellowship
 Eldon A. and June E. Tessman Fellowship Endowment
 Excellence in Entomological Research Fick Graduate Fund
 Food Science and Nutrition Fellowship
 Forest Resources Graduate Fellowship
 Forest Worker Fellowship
 Frank McKinney Fellowship in Avian Ethology
 Fred I. Froseiser Endowment Fund
 Frederick & Philip Noel Knorr Graduate Fellowship Concerning Forests and/or Tree
 G. Edward Schuh Fellowship
 Gandrud Fellowship

Gordon and Lynette Marten Fellowship
 Gordon Gullion Fellowship Fund
 Grad Fellowship for Excellence in Applied Pest Mgmt
 Harold H. & Iva Flor Endowment Fund
 Hayes 21st Century Fellowship Fund
 Henry L. Hansen Forest Ecology Fellowship
 Henry L. Hansen Forest Ecology Fellowship II
 Howe Graduate Fund
 Hueg-Harrison Fellows Fund
 Hugo J. & Helen K. Pawek Fellowship in Wood Science
 Hugo J. and Helen K. Pawek Fellowship in Forest Resources
 IMV International Corp/Bo and Margareta Crabo Fellowship Fund
 Jean W. Lambert Graduate Fellowship
 Joan Gordon Memorial Food Chemistry Fellowship
 John D. Donker Award
 John Dueck Plant Pathology Fellowship
 Joyce Davenport Fellowship in Natural History
 Kellogg Whole Grain Fellowship
 L. Daniel Frenzel & Thomas F. Waters Fellowship
 M. F. Kernkamp Endowment Fund
 Marie and Ken Bezdicek Fellowship

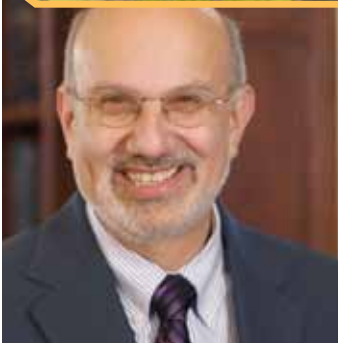
Marion Brooks-Wallace Graduate Fellowship Fund
 Mary A. and Robert B. Litterman Endowed Fellowship
 Mary E. Sorensen Fellowship in Foods and Business
 McKay Food Microbiology Graduate Student Research Fellowship
 Merle P. Meyer Fellowship in Forest Resources
 Monsanto Multifunctional Agricultural and Food Systems Fellowship
 Morris and Elaine Soffer Rockstein Fellowship Fund
 Norman and Cynthia Engelbrecht Fellowship Fund
 Northern Minnesota Forage and Turf Seed Fellowship Fund
 Novartis Nutrition Award
 Peter F. Ffolliott Graduate Fellowship in Forest Resources
 Philip Harein Graduate Fellowship
 Pioneer Hi-Bred Plant Breeding Fellowship
 Pioneer Plant Breeding Fund
 Pomeroy Award
 Project AgGRAD Fund
 Rahr Foundation Graduate Endowment
 Raymond J. Tarleton Graduate Award
 Reid Landscape-Horticulture Fund
 Robert J. Hartle Research Fellowship Fund

Ron and Judy Phillips Plant Genetics Scholars Fund
 Sam Chung Hsieh Graduate Fellowship Fund
 Simons Foundation Fellowship in Systematic Biology
 Skarra Graduate Award
 Sping and Ying-ngoh Lin Graduate Fund
 The Jean E. and Mark T. Schroeffer Fellowship Fund
 The Josephine and Waldemore Mohl Fund
 The Leigh H. Perkins Fellowship in Wildlife Management
 The Norman E. Borlaug Fellowship for International Agriculture
 The Raymond Allmaras Graduate Fund
 The Wally Dayton Fellowship in Wildlife Research
 Thomas Eugene Avery Graduate Fellowship in Forest Resources
 Troyer-Darwin Plant Breeding Fellowship
 Turfgrass Science Fellowship
 Warthesen 21st Century Fellowship Fund
 Willis L. & Dorothy L. Peterson Graduate Fellowship
 Wood-Rill Graduate Fellowship in Forest Ecology
 Yellowstone National Park Wolf Project Fellowship
 Zoological Society Fund

THE YEAR In Review

CFANS

claiming our Future



February 14, 2009

The American Association for the Advancement of Science (AAAS) awards the distinction of Fellow to three CFANS faculty: Allen Levine, dean of the college and director of the Minnesota Obesity Center; Michael Sadowsky, professor, Department of Soil, Water and Climate; and Deon Stuthman, professor, Department of Agronomy and Plant Genetics.



April 2009

Stephen Polasky, professor in the Department of Applied Economics, is chosen as a Fellow of the American Academy of Arts & Sciences. Fellows are leaders in the sciences, humanities and arts, business, public affairs and the nonprofit sector. The group is one of the nation's most prestigious honorary societies; this year's 212 inductees includes Nobel laureates and recipients of the Pulitzer and Pritzker prizes, MacArthur Fellowships, Academy, Grammy, and Tony awards, and the National Medal of Arts.



May 8, 2009

Marla Spivak, professor in the Department of Entomology, has been named one of the university's four Distinguished McKnight University Professors for 2009. The McKnight awards recognize and reward outstanding mid-career faculty, who hold the title as long as they remain at the U of M.



February 27, 2009

Students, faculty, staff and stakeholders gather for the official rollout of the college's new Undergraduate Strategic Plan. After a day of talks and planning, five task forces are charged with implementing specific changes in how undergraduate students at CFANS earn their degrees. Throughout the year, the task forces host "First Thursdays," informal discussions about details of the new plan.

March 18, 2009

An innovative corn breeder, a pioneering former dean who fostered international cooperation and the founder of one of Minnesota's most successful farms are this year's recipients of the prestigious Siehl Prize For Excellence in Agriculture. The 2009 winners are: Forrest Troyer (agribusiness); William F. Hueg (knowledge); and Bob Christensen (production agriculture).

March 26, 2009

To commemorate the Department of Bioproducts and Biosystems Engineering's centennial, the American Society of Agricultural and Biological Engineers designates the department's Red Wing rural electrification project as a national historic landmark. The project, organized by the department and Northern States Power in 1923, brought electricity to farmers near Red Wing, Minn., for the first time.

May 11, 2009

The college's third commencement is held at Northrop Auditorium, with speaker Elisabeth Emerson, the World Health Organization's Thailand/Myanmar Border Health Program Officer. Emerson, a University of Minnesota graduate, has worked for WHO in Kuwait, Mozambique, New York, Indonesia and Thailand, with much of the work related to complex emergencies.



THE YEAR In Review

May 2009

While the Bell Museum's new building project received support in both Minnesota's House of Representatives and Senate, the University of Minnesota's request for bonding is vetoed by Gov. Tim Pawlenty. In September, U of M president Bob Bruininks says the university will consider partnerships with science organizations before asking lawmakers for funding again.

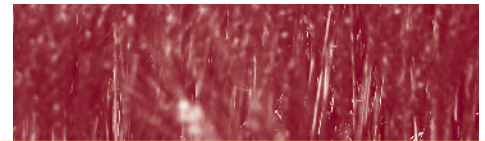


August 26, 2009

For the third year in a row, a CFANS student is Princess Kay of the Milky Way. Elizabeth Olson, a sophomore animal science major, will represent the Midwest Dairy Association for the coming year. Olson is the second Princess Kay from her family—sister Sarah Olson Schmidt won in 2002—and succeeds CFANS students Ann Miron (2007) and Kristy Mussman (2008).



September 12, 2009



CFANS loses alumnus and friend Norman Borlaug, age 95, who died at his home in Texas. Borlaug, the “father of the Green Revolution” in the 1960s and '70s, saved a billion people from starvation by most estimates. When he received the Congressional Gold Medal in 2007, he was one of only five people in history to receive that honor in addition to the Nobel Peace Prize and the Presidential Medal of Freedom—along with Nelson Mandela, Elie Wiesel, Mother Teresa and Dr. Martin Luther King.

October 2009:

The University of Minnesota celebrates its first Homecoming back on campus since 1982, in the new TCF Bank Stadium on the Minneapolis campus.



For continuing updates on CFANS events and news, visit www.cfans.umn.edu

FUNDRAISING Priorities

CFANS

Development Staff

235 Skok Hall
2003 Upper Buford Circle
St. Paul, MN 55108

Cynthia Cashman

612-624-7489

Adam Fischer

612-625-5766

Cathy Konat

612-625-5229



Dr. Norman Borlaug passed away on September 12, 2009 at age 95. He left a legacy of accomplishment and caring for others. His gift was a devotion to ending world hunger and figuring out how to get more food out of fewer acres. Please help us to continue Dr. Borlaug's legacy by giving to one of the funds honoring his name and work:

The Norman E. Borlaug Fellowship for International Agriculture

This endowment fund provides financial support for graduate fellowships in the Department of Plant Pathology. When fully endowed, the fellowship will provide a generous stipend to attract the best applicants from around the world. Graduate fellows will conduct part of their research and/or outreach and education activities in a developing country while obtaining their degrees from the University of Minnesota.



The Norman E. Borlaug Youth Institute Scholarship

This fund provides undergraduate scholarships for Norman Borlaug Youth Institute participants who have chosen to attend the University of Minnesota. Scholarship recipients will be in good academic standing and will demonstrate a desire to address the demands on our global food supply.

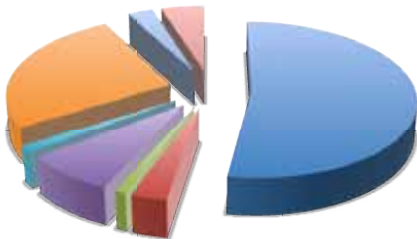
Please go to www.giving.umn.edu.

Checks may be made payable to the University of Minnesota Foundation. Or, contact one of our development staff to assist you with making your gift.

Fundraising FINANCIALS

Gifts by Source

Total Commitments for CFANS



| | |
|-----------------------|---------------------|
| Alumni: | \$5,415,447 |
| Alumni Organization: | \$324,796 |
| Alumni Faculty/Staff: | \$96,539 |
| Other Individuals: | \$820,465 |
| Faculty/Staff: | \$141,401 |
| Corporations: | \$2,700,097 |
| Foundations: | \$303,070 |
| Other Organizations: | \$503,416 |
| TOTAL | \$10,305,232 |

Gifts by Use

Total Commitments for CFANS



| | |
|----------------------------------|---------------------|
| Academic Program Support: | \$2,041,778 |
| Fellowships: | \$505,691 |
| Student Support: | \$76,343 |
| Scholarships: | \$5,289,784 |
| Capital Improvements/Facilities: | 197,738 |
| Research and Outreach: | \$1,821,290 |
| Faculty Support: | \$358,079 |
| Strategic Initiatives: | \$14,529 |
| TOTAL | \$10,305,232 |

Figures do not include the Minnesota Landscape Arboretum or the Bell Museum of Natural History

CREATING Opportunities

At the College of Food, Agricultural and Natural Resource Sciences, our goals are to teach and study the key issues of the 21st century, on both local and global levels. Stakeholders like you are crucial to our mission, because you help provide the resources to do this important work.

Since the merger that created CFANS more than three years ago, we've accomplished many things, and we've seen increased enthusiasm and commitment from our alumni, donors and friends. Your support has helped us create new and exciting opportunities in research, teaching and outreach programs for providing fuel, fiber and food, and for protecting our land, water and air.

But we still face significant challenges.

As a land-grant institution, we must provide access to our research, teaching and outreach programs, but at the same time, we need to attract the best and brightest students. As the number of students graduating from Minnesota high schools declines, this becomes a larger challenge.

Many institutions like ours are working on the issues of food and agriculture, the emerging bioeconomy, global climate and environmental change, and biodiversity; where do we fit in with all the important work happening in these areas?

The need for more resources is ever-increasing, and we must find sources beyond state and federal funding to cover those needs. Our state remains in a serious budgetary shortfall, especially in the next two to three years. This fall, the University of Minnesota is beginning several new initiatives to ensure we are best positioned respond to new realities while remaining accountable to our stakeholders

Our faculty are just one way we respond to these challenges and others. This year we were fortunate to replace eight departed faculty members with new hires, and to put in place new leadership in two units. We look to them, along with the solid team we already had in place, for innovation and solutions.

This fall we welcomed another bright new group of students, and they are an equally important component in meeting our challenges. The classes of 2010-2013 are uniquely prepared and highly interested in solving the world's biggest problems. We look forward to their ideas and enthusiasm.

We also benefit from the wisdom and generosity of our alumni, donors and partners, both local and across the globe. Your contributions and inspiration are invaluable.

As you can see, we benefit in many ways from all aspects of our CFANS community. Thank you for investing in us.

Sincerely,

Allen S. Levine, Dean

NEW Faces

Eight new faculty members join CFANS

New faculty members are on campus this fall in a variety of disciplines, including:

Brett M. Barney

Assistant Professor
Department of Bioproducts and Biosystems Engineering

Mae Davenport

Assistant Professor
Department of Forest Resources

Bo Hu

Assistant Professor
Department of Bioproducts and Biosystems Engineering

James Leising

Professor
Department of Agricultural Education

Igor Libourel

Assistant Professor
Department of Plant Biology

David Moeller

Assistant Professor
Department of Plant Biology

Peter Morrell

Assistant Professor
Department of Agronomy and Plant Genetics

Devin Peterson

Associate Professor
Department of Food Science and Nutrition

New Department Heads

Susan Weller

Bell Museum of Natural Resources

Emily Hoover

Department of Horticultural Science

CFANS FACTS & Figures

Photo by David Hansen

ENROLLMENT

Fall 2009 CFANS enrolled 1,827 undergraduates and 761 graduate students.

ENROLLMENT BY GENDER:

| | | |
|--------|-------|-----|
| Male | 1,105 | 43% |
| Female | 1,478 | 57% |

DEGREES AWARDED

| | |
|------------------------------|------------|
| Undergraduate | 426 |
| Master's | 112 |
| Doctoral/Professional | 81 |
| TOTAL DEGREES AWARDED | 619 |

SPONSORED GRANT FUNDS RECEIVED

| | | |
|----------------------------------|---------------------|-------------|
| Associations | \$5,502,413 | 10.7% |
| Business & Industry | \$5,050,310 | 9.8% |
| Foundations | \$419,500 | .8% |
| Other universities | \$4,869,848 | 9.5% |
| State of Minnesota | \$6,856,076 | 13.3% |
| USDA | \$14,259,717 | 27.7% |
| NSF | \$4,704,143 | 9.2% |
| NIH | \$6,224,685 | 12.1% |
| Other state and federal agencies | \$2,486,860 | 4.8% |
| Other | \$1,013,712 | 2.0% |
| TOTAL FUNDS RECEIVED | \$51,387,261 | 100% |

CFANS EXPENDITURES BY FUNDING SOURCE

| | | |
|-------------------------------------|----------------------|-------------|
| *State special research | \$32,046,128 | 19% |
| Grants, gifts and contracts | \$51,698,271 | 31% |
| Instructional | \$22,268,527 | 13% |
| Other income | \$19,390,335 | 12% |
| State special and federal extension | \$5,792,299 | 3% |
| Federal | \$4,572,585 | 3% |
| **Cost pool charges | \$30,653,637 | 18% |
| TOTAL FUNDS RECEIVED | \$166,421,782 | 100% |

ALUMNI

Total alumni:
28,880

Total with
undergraduate
degrees:
22,730

Total with
master's degrees:
5,465

Total with
doctoral degrees:
3,008

Total with
multiple degrees:
6,111

ALUMNI

BY GENDER:

Male: 68 %
Female: 32 %

ALUMNI BY

GEOGRAPHY:

Twin Cities: 7,333
Minnesota: 13,359
Wisconsin: 1,407
International: 583



* Includes CFANS portion of Minnesota Agricultural Experiment Station funds.

** Includes charges for utilities, building and campus maintenance, libraries, information technology, administrative services, etc.